
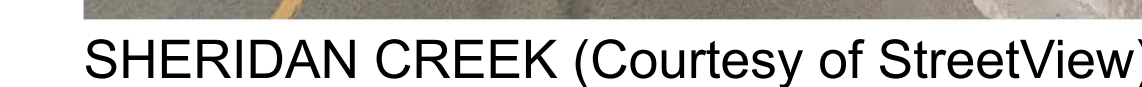
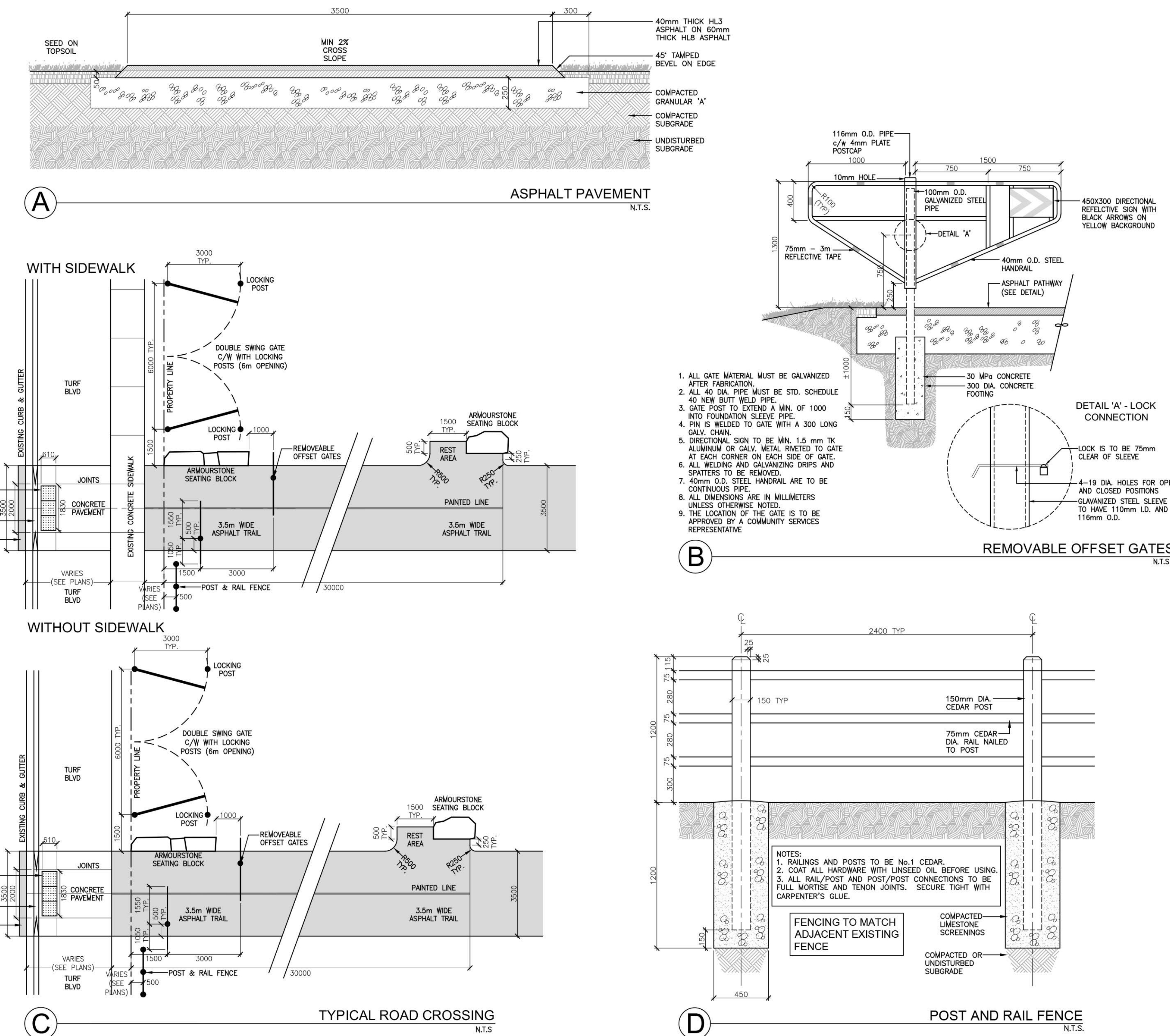





*Within the Lakeshore-Royal Windsor Hydro Corridor  
Winston Churchill Boulevard to South Sheridan Way*







**Harrington  
McAvan Ltd**  
6832 14th Avenue  
Markham, Ontario L3R 1A1  
Tel: 905-294-8282 Fax: 905-294-7623  
[www.harringtonmcavan.com](http://www.harringtonmcavan.com)  
Offices in Markham & Cambridge



 EXISTING  
VEGETATION  
 EXISTING  
VEGETATION TO  
BE REMOVED  
 EX  
STANDARD

EX ☐ EXISTING HYDRO POLE  
EX ☐ EXISTING HYDRO TOWER  
EX ☐ EXISTING MAINTENANCE HOLE  
EX ☐ EXISTING CATCH BASIN

	PROPERTY LINE
	EXISTING CHAIN LINK FENCE TO REMAIN
	EXISTING WOODEN FENCE/ RAILING
	APPROX. TNPI EASEMENT

PRELIMINARY TRAIL ALIGNMENT

N.T.S.